



Jet-s 4VOC

EN 81-20/50

4 PANELS CENTRAL OPENING CAR DOOR



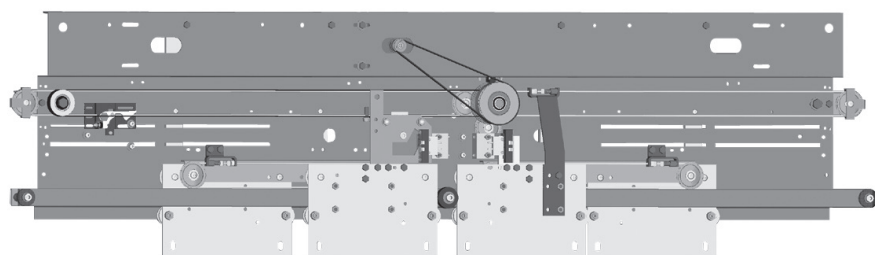
Jet-s

AUTOMATIC CAR DOOR

4 panels central opening

Designed to meet all your requirements, the JET-S 4VOC car door ensures the perfect operation of the landing door with which it is associated, whether it is an automatic or manual door.

Dimensional requirements, adaptation to sheltered landing doors whether SLYCMA brand or other, technological performances : all these parameters are integrated and ensures the perfect match between your lift and our car door.



Control by frequency variation :

- **Pleasant** to use
- Compact **design**
- Proven and standardised technology
- **Fast and easy** commissioning
- **Adaptable** to all uses
- Consideration of the environment
- Means to maintain the unit in operation
- The guarantee to be in compliance with current standards and legislation
- Automatic stroke programming
- The **anti-pinch** system (glazed door)

JET-S automatic car door dimensions 4 panels central opening

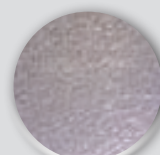
| | MINI | MAXI |
|---------------------|------------------------------|------|
| Clear opening (CO) | 1200 | 2400 |
| Clear height (CH) | 1900 | 2500 |
| Sill width | 135 | |
| Operator dimensions | 286 x 458 (depth x height) | |

In compliance with standard
EN 81-20/50
Ideal for **Modernisation projects**
and **New installations**



- Standard operation with SLYCMA landing doors
- Compatible with the majority of landing doors on the market
- Adaptable with or without modification of car entrance columns

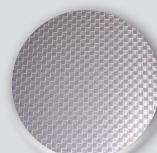
Standard finishes



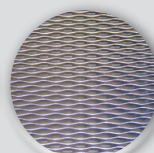
Leather grain
stainless steel D42*



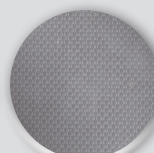
Brushed stainless
steel Gr220*



Square stainless
steel*



5WL stainless
steel*



Linen stainless
steel*



Primer



RAL colour*

Laminated glass finishes



Clear*



Opal*



Reflective glass*

*Optional



SLYCMA Head office
Parc d'activité du Dôme
4 route du Dôme
69630 Chaponost
FRANCE

Tél. : +33 (0)4 78 86 81 00
Fax : +33 (0)4 78 86 81 08

SLYCMA Paris

34 route de Longjumeau
91380 Chilly-Mazarin
FRANCE

Tél. : +33 (0)1 69 79 32 10
Fax : +33 (0)1 69 79 32 15

www.slycma.com