



# FINITURE



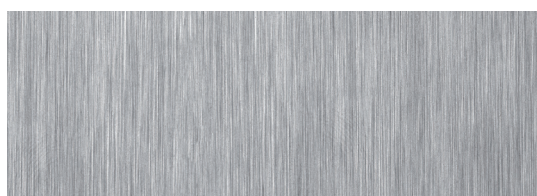
**PORTE ASCENSORI**

# FINITURA INOX

*Il classico*

- 3 finiture «standard»
- Altre finiture in acciaio inox disponibili su richiesta
- AISI 304

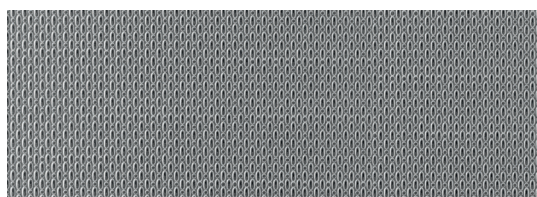
Ecco qualche esempio :



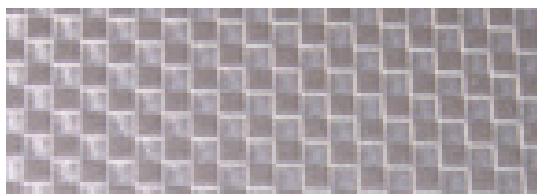
Inox AISI 304  
satinato



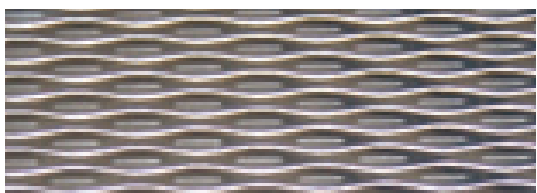
Inox AISI 304  
cuoio



Inox AISI 304  
lino



Inox a scacchiera  
Su richiesta



Inox AISI 304  
chicco di riso  
Su richiesta

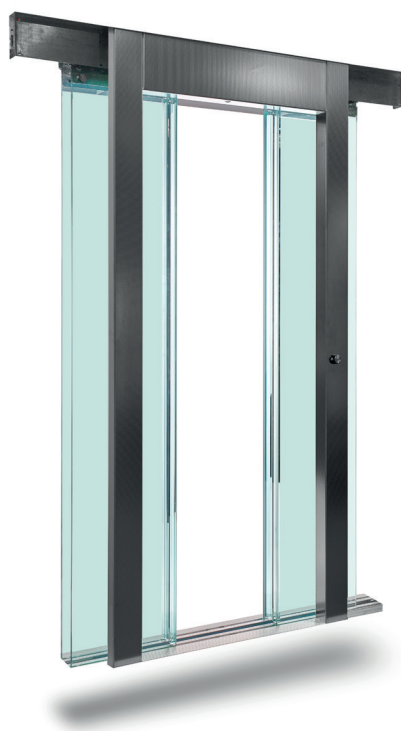


# FINITURA VETRO

*Trasparenza*

- Scelta di 6 finiture  
Finiture estetiche

Ecco qualche esempio :



Vetro  
**CHIARO**



Vetro  
**OPALE**



Vetro  
**ANTELIO ARGENTO**



Vetro  
**ANTELIO CHIARO**



Vetro  
**ANTELIO BRONZO**



Vetro  
**VETRO A FILO**  
con telaio

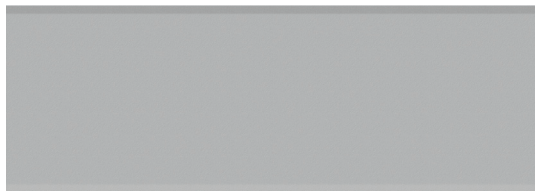


# FINITURA COLORE

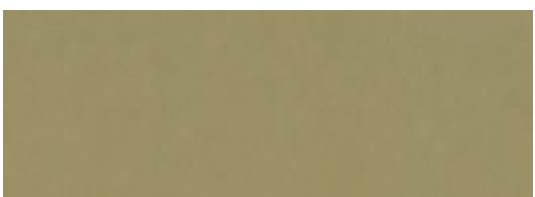
*Speciale porta a soffietto PLYPAL - PLYCAB*

- Finitura estetica garantita  
Finitura dedicata per PLYCAB

Ecco qualche esempio :



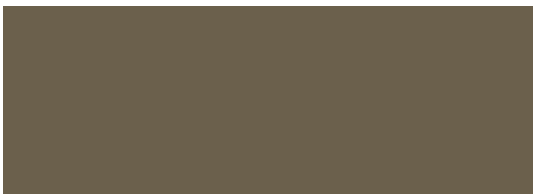
Anodizzazione  
**ALUMINIO NATURALE**



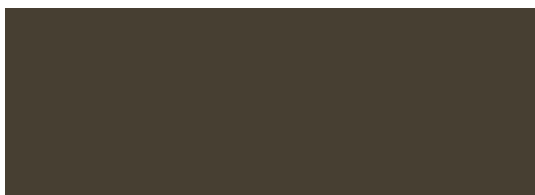
Anodizzazione  
**CHAMPAGNE**



Anodizzazione o Laccatura  
**ORO**



Laccatura  
**BRONZO N°5**



Laccatura  
**BRONZO N°6**



Laccatura  
**NERO**



Laccatura  
**Tinta RAL**

