



LYNEA

2020



LIFT DOORS

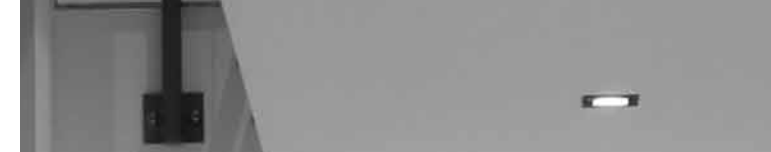




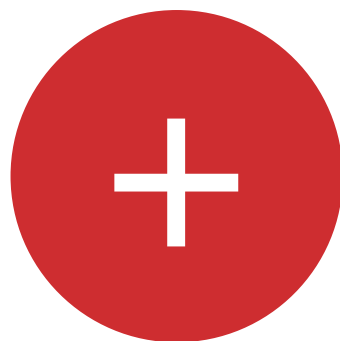
LYNEA STANDARD & PANORAMIC

ONE PANEL SWING DOOR

- Genalock Slycma Lock
- No spot welding marks on the panel
- No more sanding marks on the frame
- Resistance of the door closer to violent openings.
- Behaviour of the panel in the event of impact in accordance with vandal-resistant standard EN 81-71



LYNEA



key features

What makes the LYNEA door, the unique lift door, adapted to each of your creations, whatever the building where it will be installed ?

1. Reliability, robustness and aesthetics guaranteed,
2. A model designed as standard to adapt to all configurations,
3. A wide range of finishes, with accessories available in different materials, finishings and colours,
4. Taking into account our customers' expectations to have a highly customizable product,
5. Easy and quick maintenance.
6. Reliability and endurance.
7. A core range available from stock.



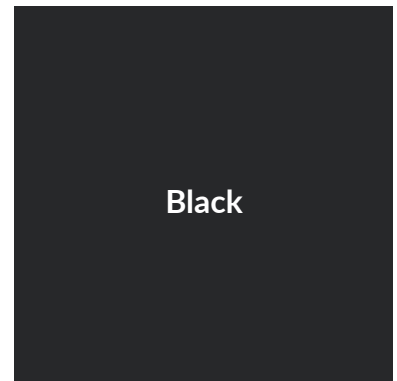
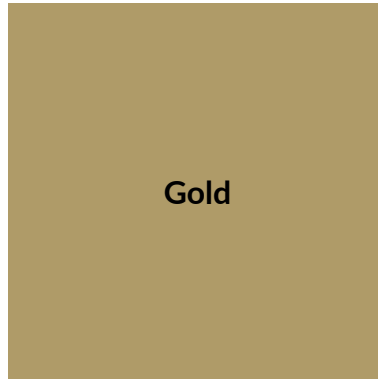
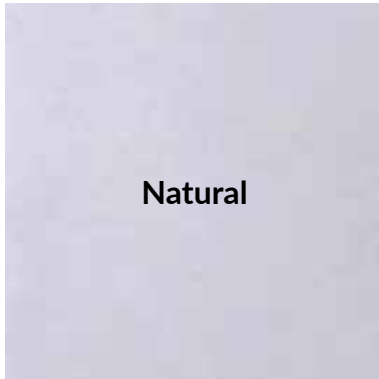
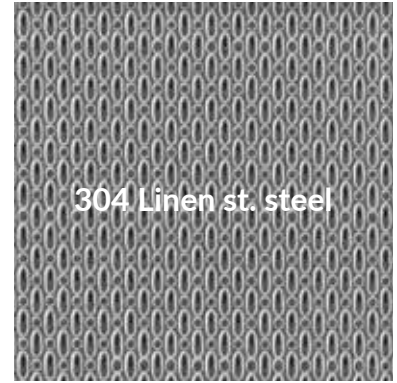
EN 81-58 E120
EN 81-20/50
EN 81-21
2014/33/UE



Dimensions of one panel swing landing door

	DIMENSIONS IN MM		
	LYNEA		LYNEA XS
PL / CO	500 to 900 mm	950 to 1300 mm	440 to 800 mm
HL / CH	Standard 2000 mm (mini 1840 - maxi 2200)		
Header	Standard 110 mm (mini 50 - maxi 450)		Standard 110 mm (mini 86)
Lock upright	Standard 110 mm (mini 90 - maxi 450)		Standard 70 mm
Hinges upright	Standard 110 mm (mini 70 - maxi 450)		Standard 70 mm
Number of hinges	2 en standard (4 optional)	4 in standard	2 in standard
Window	Standard 70 x 1200 mm (panoramic CO - 150 X 1757 mm optional)		

SOME FINISHES AVAILABLE



To contact us :

LYON Head office

4 route du Dôme
69630 Chaponost
Tél: +33 (0)4 78 86 81 00
slycma@slycma.com

PARIS Office

34 route de Longjumeau
91380 Chilly Mazarin
Tél. : +33 (0)1 69 79 32 10
magasin.mazarin@slycma.com